

Applicable relays and sensors:

SERIES M500 (DC Coil),
M501 (AC Coil),
M502 (DC Coil), M550 (DC Coil),
T531, CS500

GENERAL CHARACTERISTICS
CARACTERISTIQUES GENERALES

Tooling #12 Outillage #12	Crimp tool <i>Pince à sertir</i>	M22520/1-01 with turret M22520/1-02 (Yellow)
	Insertion and extraction tool <i>Outil d'insertion et d'extraction</i>	M81969/14-04
Tooling #16 Outillage #16	Crimp tool <i>Pince à sertir</i>	M22520/1-01 with turret M22520/1-02 (Blue)
	Insertion and extraction tool <i>Outil d'insertion et d'extraction</i>	M81969/14-03
Tooling #20 Outillage #20	Crimp tool <i>Pince à sertir</i>	M22520/1-01 with turret M22520/1-02 (Red)
	Insertion and extraction tool <i>Outil d'insertion et d'extraction</i>	M81969/14-02
Weight <i>Poids</i>		45g max
Temperature range <i>Température d'utilisation</i>		-70° C to +125° C
In accordance to <i>En accord selon</i>		MIL-DTL-12883/48 and 54
Contacts and hardware delivered in a separate plastic bag <i>Contacts et visserie livrés séparément dans un sachet plastique</i>		
Gasket sealed socket, crimp contacts <i>Socle étanche par joint silicone, contacts à sertir</i>		

LEACH INTERNATIONAL EUROPE S.A.S.

Tel: +33 3 87 97 98 97

Fax: +33 3 87 97 96 86

LEACH INTERNATIONAL ASIA PACIFIC

Tel: +852 2 191 3830

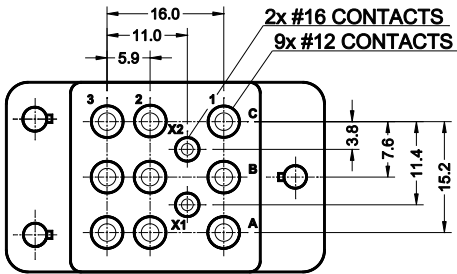
Fax: +852 2 389 5803

The technical information provided by Leach International Europe is to be used as a guide only, and is not meant for publication or as documentation for altering any existing specification. Dimensions are in millimeters unless otherwise specified. Rev. 06/2019.

TERMINAL LAYOUT
TYPE DE SORTIE

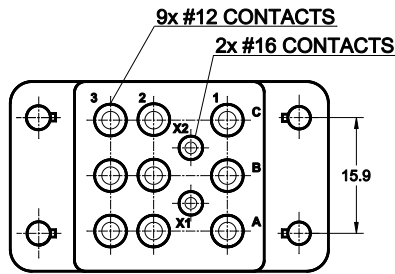
Dimensions in mm
Tolerances, unless otherwise specified, $\pm 0.25\text{mm}$

Series S500/S501
Code A



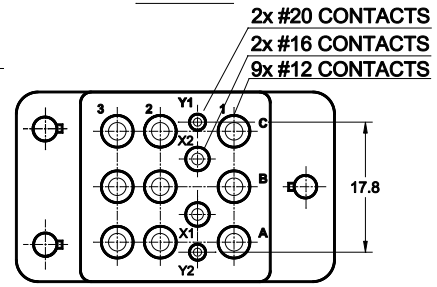
Applicable to
M500/M501/CS500

Series S501
Code E



Applicable to
M501 Mounting E

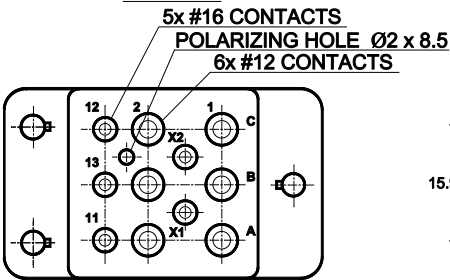
Series S502
Code C



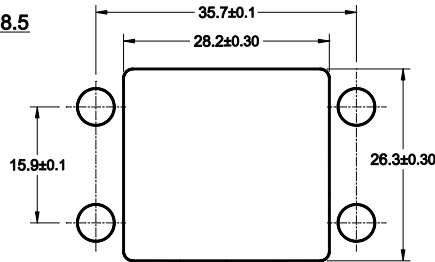
Applicable to
M502 2x #16 CONTACTS

MOUNTING HOLE LAYOUT
DECOUPE DE LA STRUCTURE

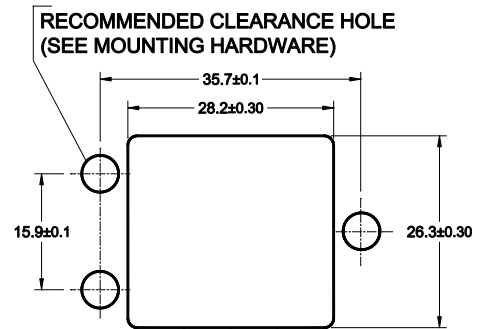
Series S550
Code D



Applicable to
M550



FOR CODE E

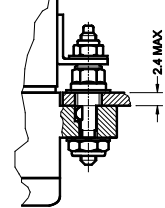


FOR OTHERS CODE

MOUNTING HARDWARE
TYPE DE VISSERIE

CODE 1 : 05 284 12
LOOSE STUD
UNC HARDWARE

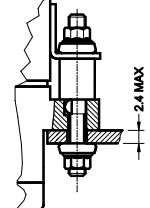
PANEL MOUNT HOLE: $\varnothing 5,3$



MOUNTING TORQUE
112-40: 0.45 Nm
190-32: 1.2 Nm

CODE 2 : 05 284 00
LOOSE STUD
METRIC HARDWARE

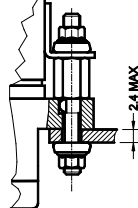
PANEL MOUNT HOLE: $\varnothing 3,5$



MOUNTING TORQUE
M3: 0.45 Nm

CODE 3 : 05 284 07
LOOSE STUD
METRIC HARDWARE

PANEL MOUNT HOLE: $\varnothing 3,5$



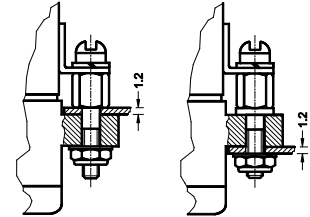
MOUNTING TORQUE
M3: 0.45 Nm

CODE 4
WITHOUT HARDWARE
HOLE DIAM 2.9 mm
FOR 112-40 SCREW

CODE 5
WITHOUT HARDWARE
HOLE DIAM 3.1 mm
FOR M3 SCREW

CODE 6 : 05 284 13
LOOSE STUD - UNC HARDWARE

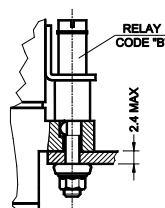
PANEL MOUNT HOLE: $\varnothing 3,5$



MOUNTING TORQUE
112-40: 0.45 Nm

CODE 7 : 05 284 15
LOOSE STUD METRIC HARDWARE

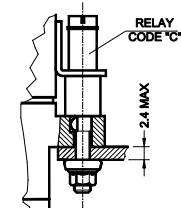
PANEL MOUNT HOLE: $\varnothing 3,5$



MOUNTING TORQUE
M3: 0.45 Nm

CODE 10 : 05 284 16
LOOSE STUD UNC HARDWARE

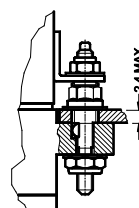
PANEL MOUNT HOLE: $\varnothing 3,5$



MOUNTING TORQUE
112-40: 0.45 Nm

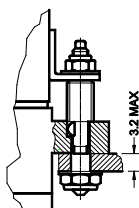
CODE 8 : 05 284 20
LOOSE STUD - UNC HARDWARE

PANEL MOUNT HOLE: $\varnothing 5,3$



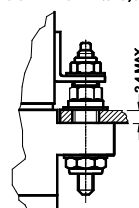
MOUNTING TORQUE
112-40: 0.45 Nm
190-32: 1.2 Nm

PANEL MOUNT HOLE: $\varnothing 3,5$



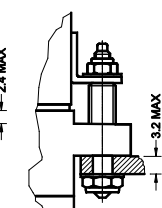
CODE 9 : 05 284 21
FIXED STUD - UNC HARDWARE

PANEL MOUNT HOLE: $\varnothing 5,3$



MOUNTING TORQUE
112-40: 0.45 Nm
190-32: 2.0 Nm

PANEL MOUNT HOLE: $\varnothing 3,5$



GROMMET TYPE

TYPE DE JOINT D'ETANCHEITE

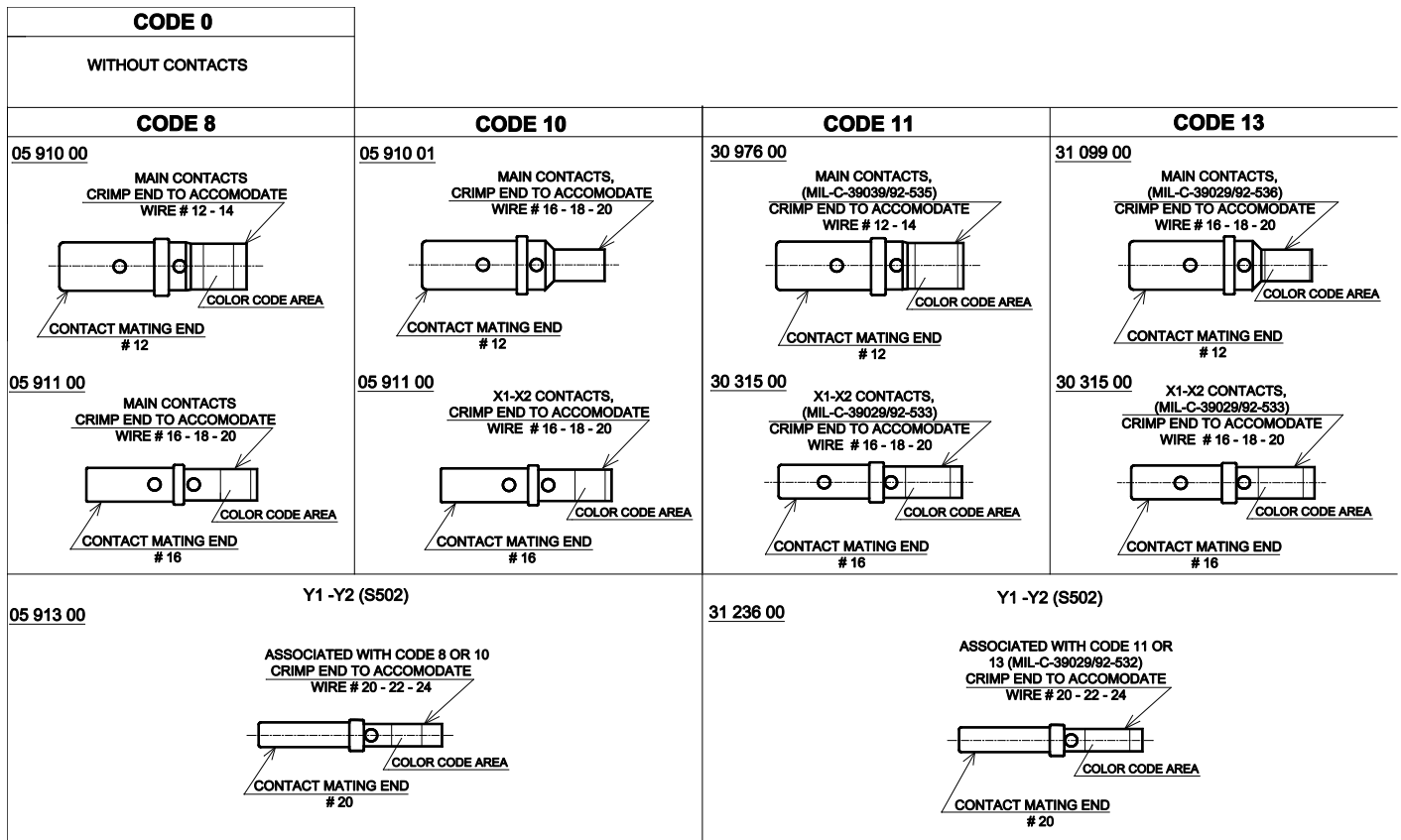
Wire sealing: A silicone grommet is permanently bonded to the wire entry face of the socket so as to provide sealing capabilities for AWG size 12, 16, and 20 wire as applicable.

Étanchéité du fil : Un joint silicone fait partie intégrante du socle et permet de garantir une étanchéité des fils de AWG 12, 16 et 20.

CODE A	
External wire diameter / Diamètre extérieur du Fil	Dimensions in mm
Main contacts # 12	2.0 to 3.4
X1-X2 Contacts and Auxiliary contacts # 16	1.2 to 2.6
Y1-Y2 Contacts (S502) # 20	0.8 to 1.4

CONTACT SIZE AND STYLE

TAILLE ET STYLE DE CONTACTS

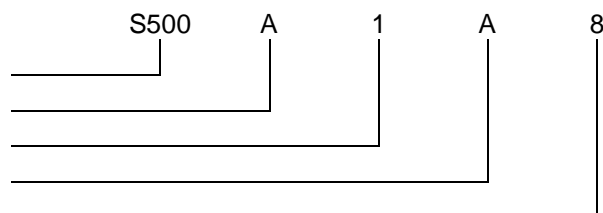


SOCKET NUMBERING SYSTEM

SYSTEME DE REFERENCES

Basic series designation | Référence de base

1. Terminal layout | Type de sorties
2. Mounting hardware | Type de visserie
3. Grommet type | Type de joint d'étanchéité
4. Contact size and style | Taille et style de contact



Example : S500-A1A8

MS/LEACH CROSS PART NO
CORREPDANCE MIL/LEACH

MIL - Number		LEACH P/N	CONTACTS TYPE	HARDWARE
MIL-DTL-12883/48	01S	S500-A8A11	9 x M39029/92-535 2 x M39029/92-533	Loose Stud
	02S	S500-A9A11	9 x M39029/92-535 2 x M39029/92-533	Fixed Stud
	09S	S500-A9A13	9 x M39029/92-536 2 x M39029/92-533	Fixed Stud
	05S	S501-E8A11	9 x M39029/92-535 2 x M39029/92-533	Loose Stud
	06S	S501-E9A11	9 x M39029/92-535 2 x M39029/92-533	Fixed Stud
	10S	S501-E9A13	9 x M39029/92-536 2 x M39029/92-533	Fixed Stud
MIL-DTL-12883/54	01S	S550-D9A11	6 x M39029/92-535 5 x M39029/92-533	Fixed Stud
	04S	S502-C9A11	9 x M39029/92-535 2 x M39029/92-533 2 x M39029/92-532	Fixed Stud

NOTES
REMARQUES

1. **Qualification and quality levels : Contact the factory**
Niveaux de qualification et de qualité : Nous consulter.