

Applicable relays and sensors:
SERIES M500 (DC Coil),
M501 (AC Coil),
M502 (DC Coil), M550 (DC Coil),
T531, CS500

GENERAL CHARACTERISTICS

CARACTERISTIQUES GENERALES

Tooling #12 <i>Outillage #12</i>	Crimp tool <i>Pince à sertir</i>	M22520/1-01 with turret M22520/1-02 (Yellow)
	Insertion and extraction tool <i>Outil d'insertion et d'extraction</i>	M81969/14-04
Tooling #16 <i>Outillage #16</i>	Crimp tool <i>Pince à sertir</i>	M22520/1-01 with turret M22520/1-02 (Blue)
	Insertion and extraction tool <i>Outil d'insertion et d'extraction</i>	M81969/14-03
Tooling #20 <i>Outillage #20</i>	Crimp tool <i>Pince à sertir</i>	M22520/1-01 with turret M22520/1-02 (Red)
	Insertion and extraction tool <i>Outil d'insertion et d'extraction</i>	M81969/14-02
Weight <i>Poids</i>		45g max
Temperature range <i>Température d'utilisation</i>		-70° C to +125° C
In accordance to <i>En accord selon</i>		MIL-DTL-12883/48 and 54
Contacts and hardware delivered in a separate plastic bag <i>Contacts et visserie livrés séparément dans un sachet plastique</i>		
Gasket sealed socket, crimp contacts <i>Socle étanche par joint silicone, contacts à sertir</i>		

AMERICAS.

Tel: +1 714-736-7599
<http://www.esterline.com/powersystems>

EUROPE.

Tel: +33 3 87 97 31 01
Fax: +33 3 87 97 96 86

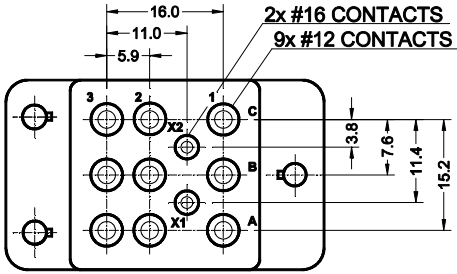
ASIA

Tel: +852 2 191 3830
Fax: +852 2 389 5803

TERMINAL LAYOUT TYPE DE SORTIE

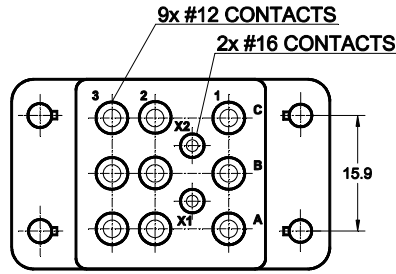
Dimensions in mm
Tolerances, unless otherwise specified, ± 0.25 mm

Series S500/S501 Code A



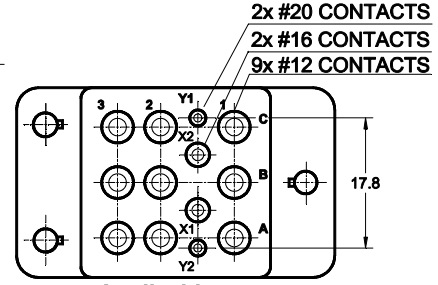
Applicable to
M500/M501/CS500

Series S501 Code E



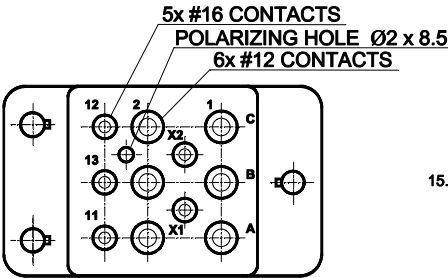
Applicable to
M501 Mounting E

Series S502 Code C



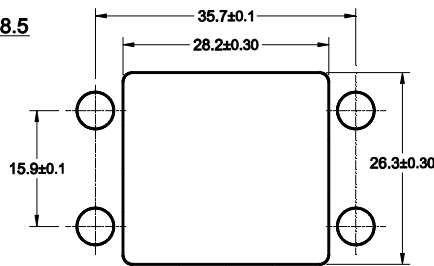
Applicable to
M502 2x #16 CONTACTS

Series S550 Code D

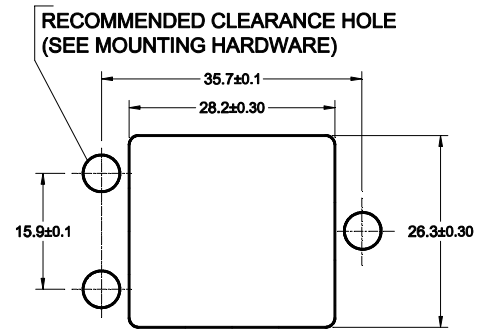


Applicable to
M550

MOUNTING HOLE LAYOUT DECOUPE DE LA STRUCTURE



FOR CODE E

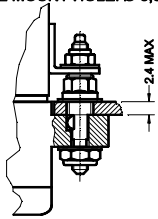


FOR OTHERS CODE

MOUNTING HARDWARE TYPE DE VISSERIE

CODE 1 : 05 284 12 LOOSE STUD UNC HARDWARE

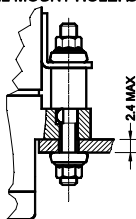
PANEL MOUNT HOLE: $\varnothing 5,3$



MOUNTING TORQUE
112-40: 0.45 Nm
190-32: 1.2 Nm

CODE 2 : 05 284 00 LOOSE STUD METRIC HARDWARE

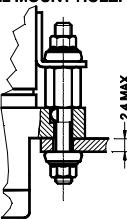
PANEL MOUNT HOLE: $\varnothing 3,5$



MOUNTING TORQUE
M3: 0.45 Nm

CODE 3 : 05 284 07 LOOSE STUD METRIC HARDWARE

PANEL MOUNT HOLE: $\varnothing 3,5$



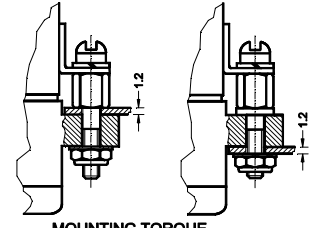
MOUNTING TORQUE
M3: 0.45 Nm

CODE 4 WITHOUT HARDWARE HOLE DIAM 2.9 mm FOR 112-40 SCREW

CODE 5 WITHOUT HARDWARE HOLE DIAM 3.1 mm FOR M3 SCREW

CODE 6 : 05 284 13 LOOSE STUD - UNC HARDWARE

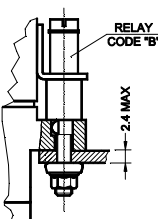
PANEL MOUNT HOLE: $\varnothing 3,5$



MOUNTING TORQUE
112-40: 0.45 Nm

CODE 7 : 05 284 15 LOOSE STUD METRIC HARDWARE

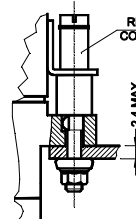
PANEL MOUNT HOLE: $\varnothing 3,5$



MOUNTING TORQUE
M3: 0.45 Nm

CODE 10 : 05 284 16 LOOSE STUD UNC HARDWARE

PANEL MOUNT HOLE: $\varnothing 3,5$

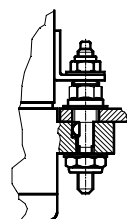


MOUNTING TORQUE
112-40: 0.45 Nm

CODE 8 : 05 284 20 LOOSE STUD - UNC HARDWARE

PANEL MOUNT HOLE: $\varnothing 5,3$

PANEL MOUNT HOLE: $\varnothing 3,5$

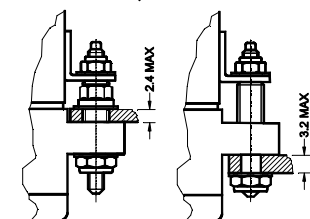


MOUNTING TORQUE
112-40: 0.45 Nm
190-32: 1.2 Nm

CODE 9 : 05 284 21 FIXED STUD - UNC HARDWARE

PANEL MOUNT HOLE: $\varnothing 5,3$

PANEL MOUNT HOLE: $\varnothing 3,5$



MOUNTING TORQUE
112-40: 0.45 Nm
190-32: 2.0 Nm

GROMMET TYPE

TYPE DE JOINT D'ETANCHEITE

Wire sealing: A silicone grommet is permanently bonded to the wire entry face of the socket so as to provide sealing capabilities for AWG size 12, 16, and 20 wire as applicable.

Étanchéité du fil : Un joint silicone fait partie intégrante du socle et permet de garantir une étanchéité des fils de AWG 12, 16 et 20.

CODE A	
External wire diameter / Diamètre extérieur du Fil	Dimensions in mm
Main contacts # 12	2.0 to 3.4
X1-X2 Contacts and Auxiliary contacts # 16	1.2 to 2.6
Y1-Y2 Contacts (S502) # 20	0.8 to 1.4

CONTACT SIZE AND STYLE

TAILLE ET STYLE DE CONTACTS

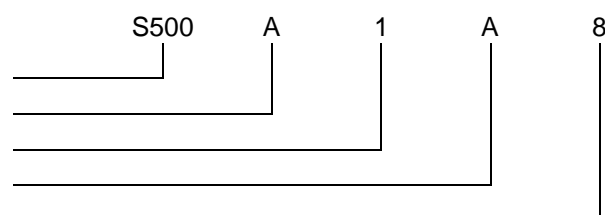
CODE 0			
WITHOUT CONTACTS			
CODE 8	CODE 10	CODE 11	CODE 13
<p>05 910 00</p> <p>MAIN CONTACTS CRIMP END TO ACCOMMODATE WIRE # 12 - 14</p> <p>CONTACT MATING END # 12</p> <p>COLOR CODE AREA</p>	<p>05 910 01</p> <p>MAIN CONTACTS, CRIMP END TO ACCOMMODATE WIRE # 16 - 18 - 20</p> <p>CONTACT MATING END # 12</p>	<p>30 976 00</p> <p>MAIN CONTACTS, (MIL-C-39039/92-535) CRIMP END TO ACCOMMODATE WIRE # 12 - 14</p> <p>CONTACT MATING END # 12</p> <p>COLOR CODE AREA</p>	<p>31 099 00</p> <p>MAIN CONTACTS, (MIL-C-39029/92-536) CRIMP END TO ACCOMMODATE WIRE # 16 - 18 - 20</p> <p>CONTACT MATING END # 12</p> <p>COLOR CODE AREA</p>
<p>05 911 00</p> <p>MAIN CONTACTS CRIMP END TO ACCOMMODATE WIRE # 16 - 18 - 20</p> <p>CONTACT MATING END # 16</p> <p>COLOR CODE AREA</p>	<p>05 911 00</p> <p>X1-X2 CONTACTS, CRIMP END TO ACCOMMODATE WIRE # 16 - 18 - 20</p> <p>CONTACT MATING END # 16</p> <p>COLOR CODE AREA</p>	<p>30 315 00</p> <p>X1-X2 CONTACTS, (MIL-C-39029/92-533) CRIMP END TO ACCOMMODATE WIRE # 16 - 18 - 20</p> <p>CONTACT MATING END # 16</p> <p>COLOR CODE AREA</p>	<p>30 315 00</p> <p>X1-X2 CONTACTS, (MIL-C-39029/92-533) CRIMP END TO ACCOMMODATE WIRE # 16 - 18 - 20</p> <p>CONTACT MATING END # 16</p> <p>COLOR CODE AREA</p>
<p>05 913 00</p> <p>Y1 -Y2 (S502)</p> <p>ASSOCIATED WITH CODE 8 OR 10 CRIMP END TO ACCOMMODATE WIRE # 20 - 22 - 24</p> <p>CONTACT MATING END # 20</p> <p>COLOR CODE AREA</p>		<p>31 236 00</p> <p>Y1 -Y2 (S502)</p> <p>ASSOCIATED WITH CODE 11 OR 13 (MIL-C-39029/92-532) CRIMP END TO ACCOMMODATE WIRE # 20 - 22 - 24</p> <p>CONTACT MATING END # 20</p> <p>COLOR CODE AREA</p>	

SOCKET NUMBERING SYSTEM

SYSTEME DE REFERENCES

Basic series designation | Référence de base

1. Terminal layout | Type de sorties
2. Mounting hardware | Type de visserie
3. Grommet type | Type de joint d'étanchéité
4. Contact size and style | Taille et style de contact



Example : S500-A1A8

MIL/LEACH CROSS PART NO
CORREPDANCE MIL/LEACH

MIL - Number	LEACH P/N	CONTACTS TYPE	HARDWARE
MIL-DTL-12883/48	01S	S500-A8A11 9 x M39029/92-535 2 x M39029/92-533	Loose Stud
	02S	S500-A9A11 9 x M39029/92-535 2 x M39029/92-533	Fixed Stud
	09S	S500-A9A13 9 x M39029/92-536 2 x M39029/92-533	Fixed Stud
	05S	S501-E8A11 9 x M39029/92-535 2 x M39029/92-533	Loose Stud
	06S	S501-E9A11 9 x M39029/92-535 2 x M39029/92-533	Fixed Stud
	10S	S501-E9A13 9 x M39029/92-536 2 x M39029/92-533	Fixed Stud
MIL-DTL-12883/54	01S	S550-D9A11 6 x M39029/92-535 5 x M39029/92-533	Fixed Stud
	04S	S502-C9A11 9 x M39029/92-535 2 x M39029/92-533 2 x M39029/92-532	Fixed Stud

NOTES
REMARQUES

- Qualification and quality levels : Contact the factory**
Niveaux de qualification et de qualité : Nous consulter.