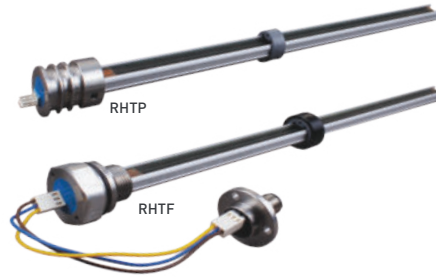


# RHTF / RHTP

## Hydraulic In-Cylinder Linear Potentiometer

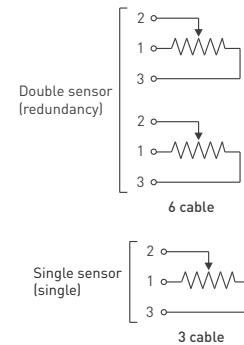
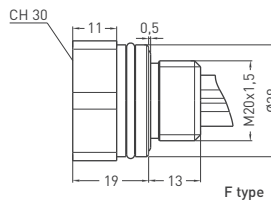
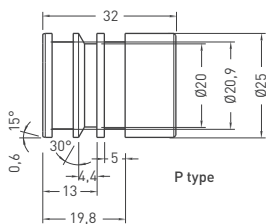
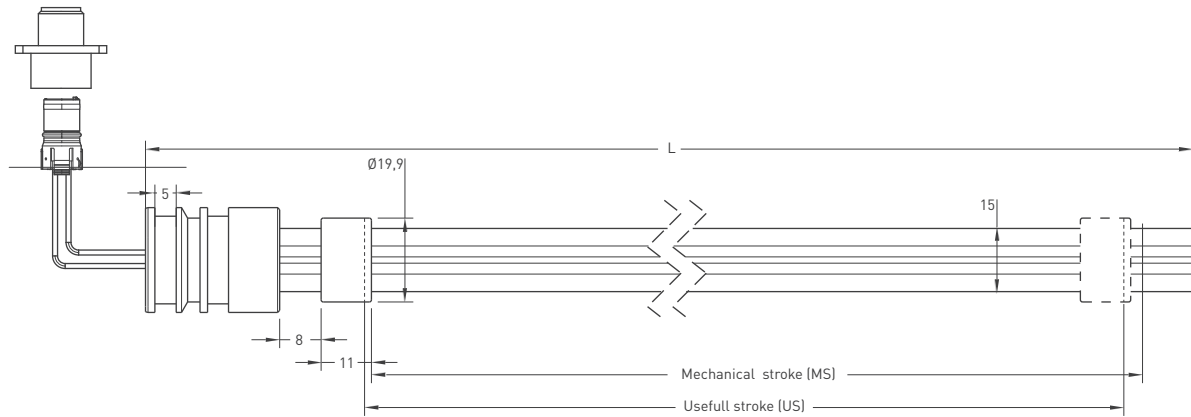


- Single and double sensor (Redundancy)
- 100 - 1000 mm measuring length
- 20 million movements life
- <0.01 mm repeatability
- 5 kOhm : 100 - 600 mm  
10 kOhm : 650 - 1000 mm



Technical Specifications	
Measurement range	100 - 1000 mm
Linearity	±%0.2 (100-125 mm) ±%0.1(130-225 mm), ±%0.05 (≥250 mm)
Repeatability	< 0.01 mm
Resolution	Infinite
Resistance	5 kOhm : 100 - 600 mm 10 kOhm : 650 - 1000 mm
Resistance tolerance	± %20
Load resistance	100 kOhm min.
Recommended wiper current	<1 µA
Power supply	28 VDC max.
Displacement speed	< 5 m/s
Mechanical life	>20 million movements
Case diameter	Ø15 mm
Case material	Anodized aluminium
Flange material	Stainless steel (AISI303)
Operating temperature	-20°C ... +80°C
Storage temperature	-30°C ... +90°C

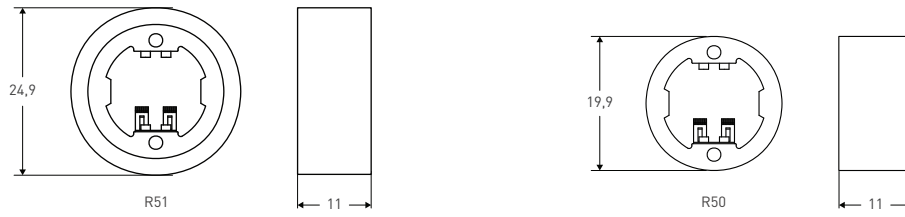
### Mechanical Specifications



RHTF / RHTP (mm)	100	150	200	250	300	350	400	450	500	550	600	650	700	750	800	850	900	950	1000
US (Measuring length)	100	150	200	250	300	350	400	450	500	550	600	650	700	750	800	850	900	950	1000
MS (Mechanical length)	104	154	204	254	304	354	404	454	504	554	604	654	704	754	804	854	904	954	1004
L (Total length)	166	216	266	316	366	416	466	516	566	616	666	716	766	816	866	916	966	1016	1066

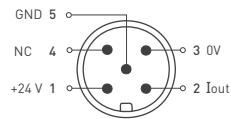
Please note: The specifications and information in this datasheet may not cover all special demands arising from specific applications. Therefore, they do not constitute a comprehensive description of the product properties. OPKON accepts no responsibility for damages resulting from the improper application of our products. The user is responsible for ensuring that the products used are suitable for their own application.

## Cursor



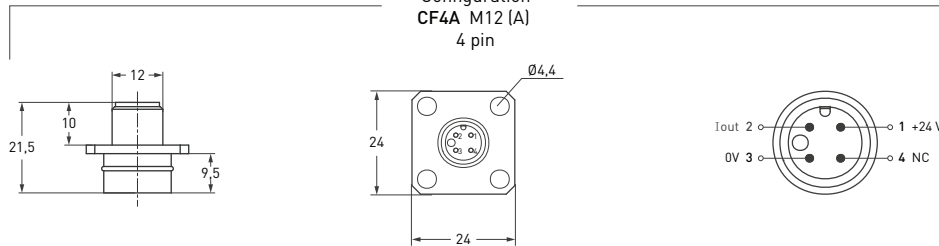
## Connector

### 5 pin connector configuration



CN5 M12 (A) / M16 (B)  
5 pin

### 4 pin Male Connector Configuration CF4A M12 (A) 4 pin



## Ordering Procedure

Model	Measurement range	Output type	Cursor	Connector/Cable	Linearity (%)	Resistance
RHTP	500	S	R50	CN5A	D	5K
RHTF : Flange type RHTP : Piston type	100 - 1000 mm	S : Single sensor (single) R : Double sensor (redundancy)	R50 : 24,9 mm R51 : 19,9 mm	CN5A: M12, 5 pin connector CF4A: M12, 5 pin connector	B: $\pm 0.2$ (100 - 125 mm), C: $\pm 0.1$ (130 - 225 mm), D: $\pm 0.05$ ( $\geq 250$ mm)	5K : 5 kOhm 10K : 10 kOhm