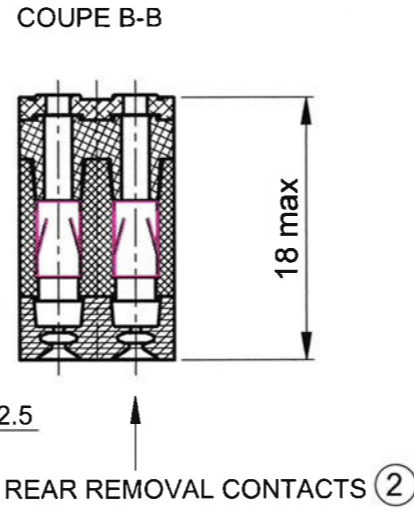
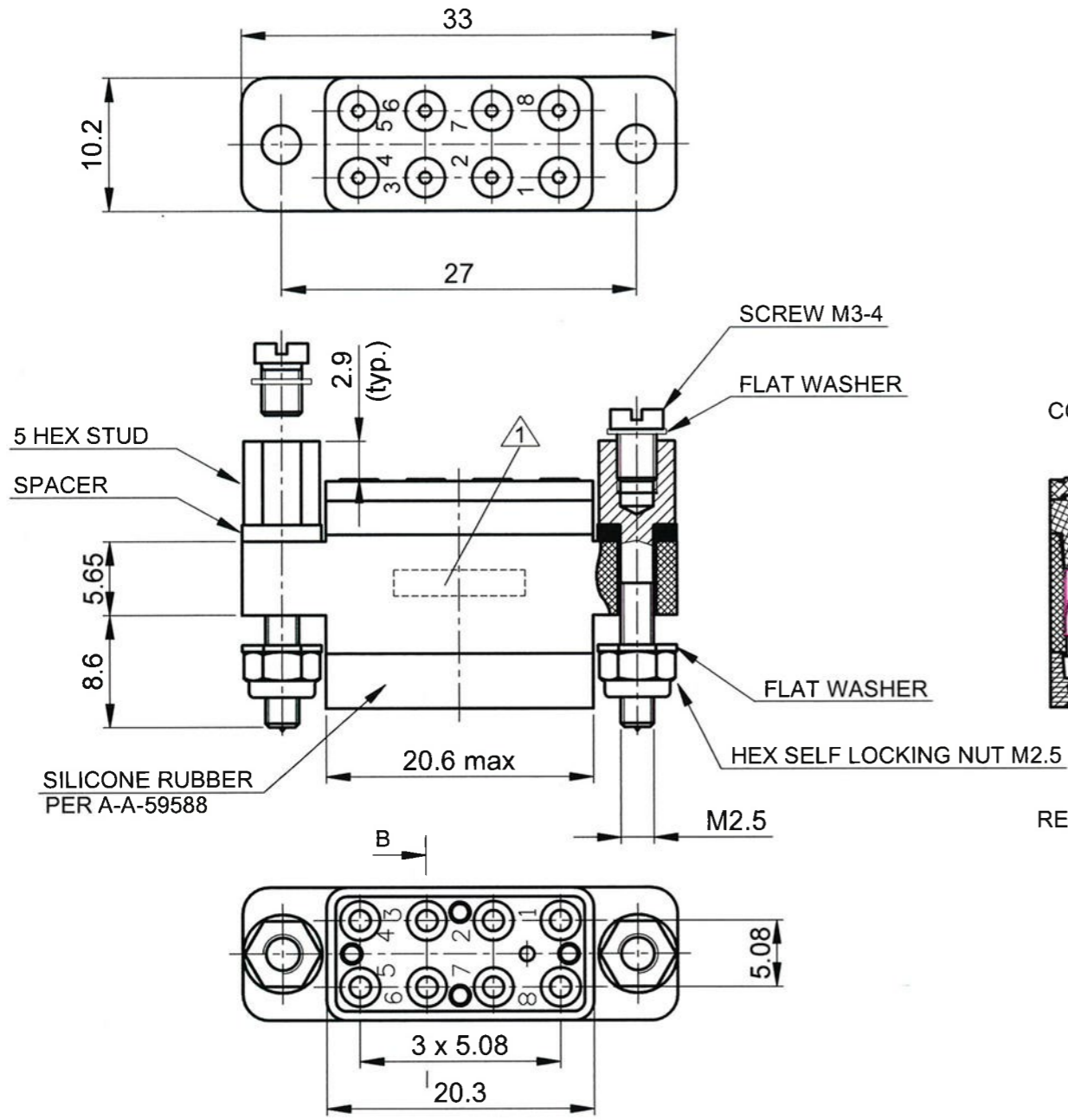
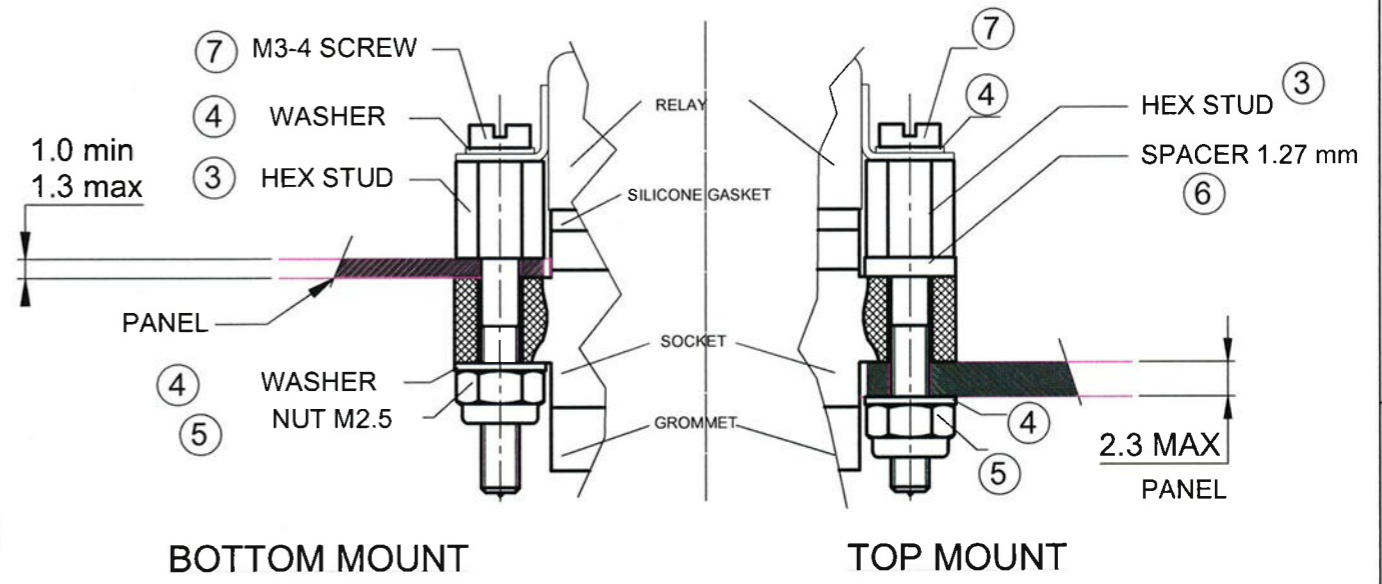


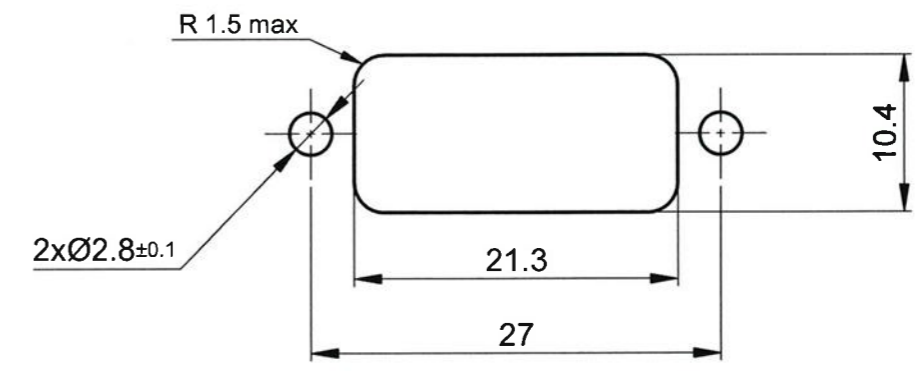
(SHOW WITHOUT HARDWARE)



MOUNTING DETAIL



PANEL CUTOUT



(SHOW WITHOUT HARDWARE, Only with studs and spacers)

NOTES

1. Marking LEACH Part-Number (S250) and Date-Code.
2. Applicable torque for nuts ..... 0.45 ± 0.1 Nm  
Applicable torque for screws ..... 0.2 ± 0.05 Nm
3. Weight (including contacts and hardware) ..... 10 Grams ± 10%
4. Tolerances, unless otherwise specified ..... ± 0.25 mm
5. Operating temperature ..... -65°C to +125°C
6. Contact size      Description      Tool No.  
# 22/20      Crimp tool      M22520/2-01  
                Turret      M22520/2-11  
                Insertion + Extraction tool      M81969/14-02
7. Socket material ..... Polyetherimide per ASTM-D5205
8. Hardware material ..... stainless steel or steel with cadmium chromate finish
9. Hardware delivered disassembled in plastic bag.

7	2	SCREW M3-4	42 0448 00	
6	2	SPACER 1,27mm	09 0452 00	
5	2	HEX SELF LOCKING NUT M2.5	41 0153 00	
4	4	WASHER DIN125	41 0020 00	
3	2	HEX STUD	42 0686 00	
2	8	CONTACTS		
1	1	SOCKET		
ITEM No.	QTY. REQUIRED	NOMENCLATURE AND DESCRIPTION	LEACH-P/N	OBS.

SPECIFIC CHARACTERISTICS :  
S250 basic socket delivered with hardware and contacts.  
Designed to receive half quartz relays (with Ø0.7/0.8 pins)

File : FT_1126797.DWG		Drawn by JPCHE	Date 14/26	NATO code : F0219	Esterline Power Systems
		Verified Bric	Date 9-7-2014		
		Scale 2/1	Size A3	This document is the propriety of LEACH International Europe and can not be disclosed or reproduced without written authorization	
		Designation of drawing RELAY SOCKET FOR 2 CONTACTS 2 Amp			Page 1/1
Product name S250		Drawing reference 1126797			Issue 2