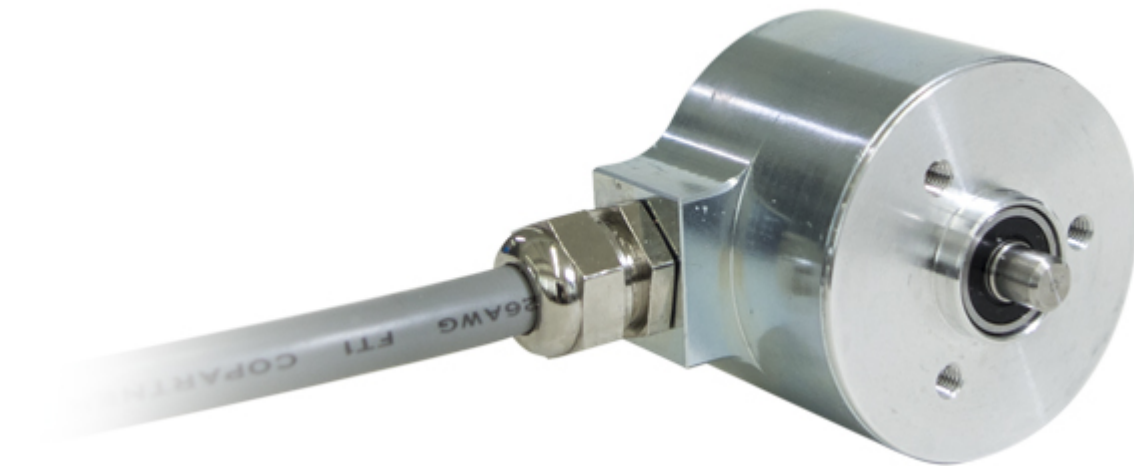


IXARC Absolute Rotary Encoder

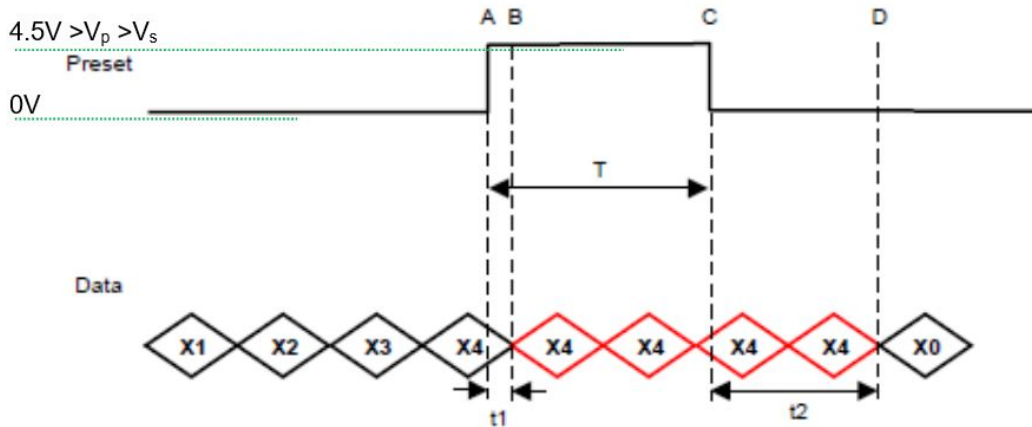
UCD-S101G-0013-0340-2RW



Interface

Interface	SSI with Preset
Manual Functions	Preset + complement via cable or connector
Interface Cycle Time	$\geq 25 \mu\text{s}$
Number of Preset Cycles	5,100,000
SSI Format	SSSSSSSSSSSS0
Video Manual	▶ Watch a simple installation video

The Preset function allows to set the output value to zero at the present mechanical position.
Input resistance is 110 kΩ



$T = 105 \text{ msec } (+/- 2\text{msec})$

$t1 = 3.5 \text{ msec } +/- 2\text{msec}$

$T + t2 = 224 \text{ msec } (+/- 4\text{msec})$

The DIR-function allows to change the encoder counting direction.

0 (open or GND)	Increasing Values Turning Clockwise (Viewed from Flange Side)
1 (4.5 V to V_s)	Decreasing Values Turning Clockwise (Viewed from Flange Side)
Min Time needed for change	40 msec
Input Resistance	60 kΩ

Outputs

Output Driver	RS422
---------------	-------

Electrical Data

Supply Voltage	4.5 - 30 VDC
Current Consumption	Typical 50 mA
Power Consumption	$\leq 1.0 \text{ W}$
Start-Up Time	$< 1 \text{ s}$
Clock Input	RS 422, via Optocoupler
Clock Frequency	100 kHz - 2 MHz
Reverse Polarity Protection	Yes
Short Circuit Protection	Yes

EMC: Emitted Interference	DIN EN 61000-6-4
EMC: Noise Immunity	DIN EN 61000-6-2
MTTF	500 years @ 40 °C

Sensor

Technology	Magnetic
Resolution Singleturn	13 bit
Resolution Multiturn	0 bit
Accuracy (INL)	±0.0878° (≤ 12 bit)
Sense Signal (Default)	Clockwise shaft movement (front view on shaft)
Code	Gray

Environmental Specifications

Protection Class (Shaft)	IP65
Protection Class (Housing)	IP65
Operating Temperature	-30 °C fixed (-22 °F), -5 °C flexible (+23 °F) - +80 °C (+176 °F)
Humidity	98% RH, no condensation

Mechanical Data

Housing Material	Steel
Housing Coating	Cathodic corrosion protection (>720 hrs salt spray resistance)
Flange Type	Clamp, ø 37 mm
Flange Material	Aluminum
Flange Coating	No Coating
Shaft Type	Solid, Single Flat, Length = 5 mm
Shaft Diameter	ø 5 mm (0.20")
Shaft Material	Stainless Steel V2A (1.4305, 303)
Max. Shaft Load	Axial 40 N, Radial 110 N
Minimum Mechanical Lifetime (10 ⁸ revolutions with Fa/Fr)	40 (20 N / 40 N), 14 (40 N / 60 N), 10 (40 N / 80 N), 6 (40 N / 110 N)
Friction Torque	≤ 3 Ncm @ 20 °C (4.2 oz-in @ 68 °F)
Max. Permissible Mechanical Speed	≤ 12000 1/min
Shock Resistance	≤ 100 g (half sine 6 ms, EN 60068-2-27)
Permanent Shock Resistance	≤ 10 g (half sine 16 ms, EN 60068-2-29)
Vibration Resistance	≤ 10 g (10 Hz - 1000 Hz, EN 60068-2-6)
Length	31 mm (1.22")

Data Sheet

Printed at 22-11-2021 13:11

Weight	540 g (1.19 lb)
--------	-----------------

Electrical Connection

Connection Orientation	Radial
Connector	Cable 2 m
Cable Length	2 m [79"]
Wire Cross Section	0.14 mm ² / AWG 26
Material / Type	PVC
Cable Diameter	6 mm (0.24 in)
Minimum Bend Radius	46 mm (1.81") fixed, 61 mm (2.4") flexing

Product Life Cycle

Product Life Cycle	New
Approval	CE

Connection Plan

SIGNAL	CABLE COLOR
Power Supply	Brown
GND	White
Data+	Gray
Data-	Pink
Clock+	Green
Clock-	Yellow
Preset	Blue
DIR	Red
Shielding	Shield

Dimensional Drawing

[2D Drawing](#)

Accessories

Clamping Rings

Clamp Disc w/ Centred Hole-4pcs

Displays

AP21-00 SSI Display

AP21-DA SSI Display (4 dig. + analog o/p)

Data Sheet

Printed at 22-11-2021 13:11

DiMod-P SSI Display
Configuration/Programming Tools
SSI2USB Adapter DB15 (VA01)

Got questions? Need an individual solution? We are here to help!



Contact Us

The picture and drawing are for general presentation purposes only. Please refer to the "Download" section for detailed technical drawings. All dimension in [inch] mm. © FRABA B.V., All rights reserved. We do not assume responsibility for technical inaccuracies or omissions. Specifications are subject to change without notice.